

Reef and Rainforest Tours



Quest for the Jaguars of Brazil

Set Departures - Led by Local Naturalist Guides

7 - 15 July 2012

14 - 22 July 2012

21 - 29 July 2012

4 - 12 August 2012

18 - 26 August 2012

25 August - 2 September 2012

8 - 16 September 2012

29 September - 7 October 2012

Quest for the Jaguars of Brazil

Set Departures - Led by Local Naturalist Guides

The jaguar is one of the most elusive big cats and one which few people have the privilege of seeing. However, Reef and Rainforest Tours are pleased to offer a group tour where sightings of jaguars are virtually guaranteed.

The key to the tour's success is that it visits a very remote and jaguar rich area of the northern Pantanal and employs a team of radio-equipped boats to locate jaguars, and direct the group to areas with the best sightings.

Since 2007 Reef and Rainforest clients have seen over 350 jaguars whilst staying on the Cuiaba River, with a 100% success rate in 2010 and 2011, a real testament to the effort put in to find this king of big cats. Some sightings have been brief whereas others have lasted for hours with many visitors returning with hundreds of photos and hours video of rarely seen behaviour such as hunting, swimming, mating, otter attacks and territorial fights.

Greater in area than Belgium, the vast seasonally flooded plain of the Pantanal is justly famed as being the most impressive wildlife location in South America. In addition to jaguars, the Pantanal has much to interest to the wildlife enthusiast: ostrich-like rhea, jabiru stork, capybara, coatimundi, crab-eating fox, burrowing and pygmy owls, coatimundi, puma, tamandua and giant anteater among others. Birds such as the toco toucan and the highly endangered hyacinth macaw (the world's largest parrot) are generally seen in good numbers, making perfect subjects for colourful pictures.

The tour visits a habituated family of giant river otters and also offers very good chances of seeing tapirs at close quarters. Viewing towers are positioned close to fruiting trees giving good sightings of fruit-eating birds and primates including Brown Capuchin Monkeys, Black and Gold Howler Monkeys, and Silvery Marmosets.

The variety of wildlife seen on this tour plus the potential of seeing some of South Americas most elusive big mammals makes this tour ideal for general wildlife enthusiasts, wildlife photographers and big cat aficionados. There is also an opportunity to extend the tour, perhaps visiting the northern Amazon, the Atlantic rainforest, Iguacu Falls or the vibrant colourful cities of Rio de Janeiro or Salvador.



Quest for the Jaguars of Brazil

9 DAYS – LED BY LOCAL NATURALIST GUIDES

TOUR IN BRIEF

- Day 01: Depart LONDON HEATHROW on TAM AIRLINES.
- Day 02: Arrive SAO PAULO and connect with flight to CUIABA. Transfer to lodge. O/n SOUTHWILD PANTANAL (PANTANAL WILDLIFE CENTRE), FB.
- Day 03: Transfer to accommodation on the Cuiaba River. Afternoon boat trip to spot Jaguars. O/n SOUTHWILD JAGUAR HOUSEBOAT (JAGUAR RESEARCH CENTRE), FB.
- Day 04: Full day search for Jaguars. O/n SOUTHWILD JAGUAR HOUSEBOAT, FB.
- Day 05: Full day search for Jaguars. O/n SOUTHWILD JAGUAR HOUSEBOAT, FB.
- Day 06: Return to SouthWild Pantanal. Afternoon activities. O/n SOUTHWILD PANTANAL, FB.
- Day 07: Full day guided activities. O/n SOUTHWILD PANTANAL, FB.
- Day 08: Tfr to CUIABA and fly to SAO PAULO. Connect with flight home.
- Day 09: Arrive LONDON HEATHROW.

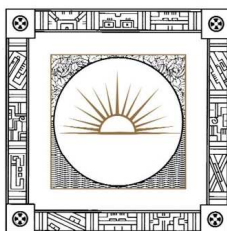
<i>Departure Dates from London</i>	<i>Adult Price</i>	<i>Single Supplement</i>
07 July 2012	£3,630	£230
14 July 2012	£3,740	£230
21 July 2012	£3,740	£230
04 August 2012	£3,740	£230
18 August 2012	£3,670	£230
25 August 2012	£3,405	£230
08 September 2012	£3,405	£230
29 September 2012	£3,405	£230

Minimum group size 2, max 9.

NB: Prices include full board accommodation, Economy flights, transfers, guided activities and the peace of mind of knowing that your payments are fully protected by ATOL. Not included are drinks from the bar, gratuities, insurance or departure taxes.

NB: Flight prices are based on a specific economy fare class and may be higher subject to availability.

NB: Extensions are possible to other areas of Brazil such as the Southern Pantanal, Iguacu Falls, Rio De Janeiro and the Atlantic coast - please call for details.



QUEST FOR THE JAGUARS OF BRAZIL

DETAILED ITINERARY

Day 01 Depart LONDON HEATHROW at 2235 on TAM AIRLINES flight JJ8085.

Day 02 Arrive SAO PAULO at 0605 and connect with flight to CUIABA, arriving 1203. Met on arrival by naturalist guide and transfer to your lodge in the Pantanal.

The Pantanal is a UK-sized mosaic of seasonally-flooded savannahs and tropical forests that offer the finest wildlife viewing in Latin America. It harbours a record 82 species of large birds, 3,000-5,000 individuals of which can be seen on a one-hour vehicle ride on the raised Transpantaneira Road, the only road into the Pantanal, which begins one hour's drive from Cuiaba. Other wildlife includes giant otter, capybara, giant anteater, tapir, three monkey species, hyacinth macaw, 400 more bird species and tens of thousands of caimans.



O/n SOUTHWILD PANTANAL (formerly PANTANAL WILDLIFE CENTRE), FB. Owned and operated by professional wildlife biologists, the lodge is found 2.5 kms off the Transpantaneira Road, on the forested banks of the wildlife-rich Pixaim River. With air-conditioned rooms and accessible riverine forest, PWC offers some of the Pantanal's best accommodation for serious wildlife enthusiasts and photographers. Your stay includes daily excursions, including boat outings, perhaps to see South America's tamest giant otters, often in a silent, electric river catamaran (excellent for tripods and long lens photography). Mobile canopy towers are often strategically placed at fruiting and flowering trees. Other possibilities include guided trail walks, and mammal spotlighting.



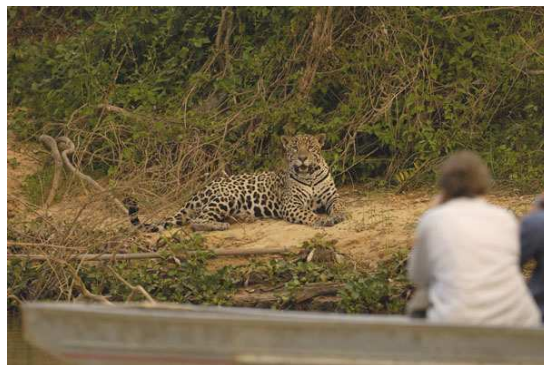
(2).../ QUEST FOR THE JAGUARS OF BRAZIL

Day 03

Continue driving to the end of the Transpantaneira to the village of PORTO JOFRE on the CUIABA RIVER. Board boat to the houseboat in the middle of the Pantanal's highest density area for jaguars. O/n SOUTHWILD JAGUAR HOUSEBOAT (formerly THE JAGUAR RESEARCH CENTRE), FB.



The SouthWild Jaguar Camp (formerly the Jaguar Research Centre) is focussed on securing reliable and quality jaguar sightings for all its guests. Jaguars have historically been one of the most difficult of the big cats to see in the wild with sightings often restricted to brief glimpses in the jungles and rainforests of Latin America. However, over the years the camps have been located in an area of Brazil's Pantanal where jaguars are found in very high numbers and are seemingly very comfortable with human presence. Since 2007, Reef and Rainforest clients have seen over 350 jaguars whilst staying at the camps with a 100% success rate in 2010 and 2011, a real testament to the effort put in to find this king of big cats. Some sightings have been brief whereas others have lasted for hours with many visitors returning with hundreds of photos and hours video of rarely seen behaviour such as hunting, swimming, mating, otter attacks and territorial fights.



The most common kills have been caiman taken at the river edge but capybara have been taken in the water and one lucky Reef and Rainforest client witnessed a stand-off between a large male and group of giant river otters that it had just tried to ambush. Key to the jaguar camps success is having all boats linked by radio and scouring different areas of the river bank. They aim to have three boats searching for jaguars for at least five hours each day with scout boats used to make up numbers when there are fewer guest boats.

(3).../ QUEST FOR THE JAGUARS OF BRAZIL

Much of your time will be spent in and around the 270,000-acre MEETING-OF-THE-WATERS STATE PARK, founded in December 2004, this is one of the largest and most pristine protected areas in the 50 million acres of the Pantanal. The riverine habitat, which is ideal for accessing the core of the park, no longer includes any ranching and the numerous jaguars that roam the area are free to hunt their favourite dry-season prey the abundant, four-to-seven feet long caimans and plump, 120-pound capybaras.



Over the years, the SouthWild Jaguar Camp (Jaguar Research Center) has shifted its location between a series of tented camps and large houseboats. For 2012 the camp will be operating from a 10-cabin houseboat with air conditioning, lower berths and private bathrooms (plenty of hot water). As well as offering comfortable accommodation, the boat has the added advantage that it can move its position as sightings change through the season.



SouthWild Jaguar Houseboat undoubtedly offers the best chance of observing jaguars anywhere in the world. As with all wildlife sightings, there is a large element of luck involved and factors such as weather can limit the number and quality of sightings. Whilst searching for jaguars you will have plenty of time to see many of the Pantanal's other great wildlife highlights such as capybaras, caiman, otters, monkeys and a huge number of birds.



Day 04

Daily tours and small group excursions with your naturalist guide (details to be decided on the spot). O/n SOUTHWILD JAGUAR HOUSEBOAT, FB.

(4).../ QUEST FOR THE JAGUARS OF BRAZIL

- Day 05 Daily tours and small group excursions with your naturalist guide (details to be decided on the spot). O/n SOUTHWILD JAGUAR HOUSEBOAT, FB.
- Day 06 Last opportunity for jaguar spotting as you return by boat and road to SouthWild Pantanal in time for lunch. Afternoon small group guided excursions with your guide. O/n SOUTHWILD PANTANAL, FB.
- Day 07 Daily small group excursions with your naturalist guide. O/n SOUTHWILD PANTANAL, FB.
- Day 08 Drive to CUIABA in time to catch TAM flight JJ3639 at 1440 to SAO PAULO, arriving 1750. Connect with TAM flight JJ8084 at 2340 to LONDON.
- Day 09 Arrive LONDON HEATHROW at 1500.



IMPORTANT NOTES TO ACCOMPANY THE ABOVE ITINERARY

NB: Jaguars are one of South America's most elusive mammals and most research biologists have only seen a handful in their lifetime. The SouthWild Jaguar Houseboat undoubtedly offers the best chance of observing these amazing animals anywhere in the world. As with all wildlife sightings, there is a large element of luck involved and factors such as weather can limit the number and quality of sightings. However, your time here will still reveal many of the Pantanal's other great wildlife highlights such as capybaras, caiman, giant river otters, monkeys and a huge amount of birds.

NB: Extensions can be taken to visit other areas of Brazil. This tour can also be followed on a private basis, prices on request.

NB: This tour will not have a specific tour leader throughout, however in each location you will be accompanied by a local naturalist guide.

NB: All itineraries are subject to change without notice to take into account possible airline flight schedule changes which can take place before departure date or during the tour, and other operational factors.

NB: The quoted price for the above itinerary is based on current airline fares (both international and domestic), current exchange rates, fuel surcharges and flight taxes. These (and other tour costs) may be subject to unanticipated increases beyond our control at short notice, either before or after you have booked the tour, in which case the price would need to be revised accordingly.

(5).../ QUEST FOR THE JAGUARS OF BRAZIL

NB: This tour involves some travel in remote areas. This adds to the adventure and increases the opportunity to enjoy a true wildlife experience. However, due to terrain, weather, road conditions, and other factors beyond our control, some elements of the tour may have to be altered. Times of some activities may need to be changed or even cancelled due to the conditions. If an activity is cancelled it will usually be replaced with an alternative activity that is more appropriate for the conditions. Advance notice will be given for any changes where possible, although at times changes may need to be made whilst the tour is in progress.

NB: Ten percent of days during the May – September “dry season” are cold and sometimes even rainy, with high and low temperatures of 9 – 12 degrees centigrade. For windy, cold boat rides, bring rainwear and warm winter coats and hats. Ninety percent of the days are hot and sunny.

NB: Prices are based on a specific airlines and specific economy seating classes. Flights are booked on an ad hoc basis and so early booking is recommended to take advantage of the cheapest fare availability. Prices may rise if a more expensive seat class needs to be booked. Please call for information on price variations for using alternative airlines or for seat upgrades.

NB: Adequate insurance cover is mandatory. Please supply us with details of your cover.

NB: Some service providers may require that guests sign an indemnity waiver form and may refuse services if these forms are not signed. Reef and Rainforest Tours cannot give refunds for services not provided due to a refusal to sign such forms.

EXTENSIONS

SOUTHERN PANTANAL

The southern Pantanal is drier, and the species diversity tends to be higher than the north, with better opportunities for viewing some of the larger mammal fauna such as giant anteaters, rheas and giant armadillo. We recommend staying at one of the small, intimate lodges such as Fazenda Barranco Alto or Embiara Lodge that can only be reached by a scenic flight over the Pantanal (or a very long overland transfer!).

IGUACU FALLS

In our opinion the most impressive falls in the world, Iguacu is not one but a full series of cascades. Shared by Brazil, Argentina and Paraguay, the falls stretch a good distance along the Rio Iguacu, along which boat rides can be taken (you will get very wet). On the Brazilian side, one walks through woodland to various viewpoints. On the Argentine side, ride a small train before crossing a long walkway across shallows to the amazing Devil's Throat cataract with its thunderous drop into the river far below. Spend two or three nights in the Orient Express owned Hotel das Cataratas, the only hotel inside the national park on the Brazilian side of the falls. Or perhaps stay on both sides of the falls with a night or two in a Falls View room at the Sheraton Iguazu Hotel and Resort – the only hotel inside the national park on the Argentinean side.

(6).../ QUEST FOR THE JAGUARS OF BRAZIL

AMAZON

Brazil contains the vast majority of the forest and rivers of Amazonia. The sheer scale of the Amazon basin is truly awesome, yet good wildlife viewing is only found in a few choice locations. Around Manaus and in many other parts of Amazonia, it is very difficult to spot wildlife satisfactorily, often due to hunting or human encroachment. But further afield, in the south and west, natural history lovers can fully experience the thrill of spotting the startling white uakari monkey, flocks of macaws, the powerful harpy eagle or a shy Brazilian tapir in the depths of the seemingly impenetrable rainforest.

RIO DE JANEIRO

Rio needs no introduction, having been a popular destination since the 1950s. Most will have heard of Copacabana and Ipanema beaches, Christ's statue on Corcovado and the cable car to Sugarloaf Mountain. Less well-known would be the Botanical Gardens and Tijuca National Park, on the re-forested slopes above Rio. We recommend a two or three night stay in a beachfront hotel (our preferred beaches are Ipanema and Leblon), or a boutique hotel in one of Rio's charming neighbourhoods.

ATLANTIC RAINFOREST

The Atlantic rainforest, or Mata Atlantica, stretches from north-east Brazil south along the Brazilian coastline to Uruguay, and inland into north-east Argentina and eastern Paraguay. Centuries of deforestation have left just 7% of the original forest remaining, with only an estimated 2% primary rainforest. Yet despite this, the Atlantic rainforest is still ranked in the top five of the world's biodiversity hotspots with many unique species including 72 endemic birds and 160 endemic mammals. Excellent birding can be found in the Atlantic rainforest less than two hours from Rio de Janeiro, at Serra dos Tucanos lodge in the Tres Picos State Park, or the Guapi Assu Bird Lodge.

Reef and Rainforest Tours Ltd.



A7 Dart Marine Park, Steamer Quay, Totnes, Devon, TQ9 5AL, UK
Tel: ++ 44 (0)1803 866965 Fax: ++ 44 (0)1803 865916

Websites: www.reefandrainforest.co.uk www.familytours.co.uk

E-mail: mail@reefandrainforest.co.uk

