

Reef and Rainforest Tours



Pantanal Safari and Iguacu Falls Set Departures - Led by Local Naturalist Guides

16 – 29 July 2011
03 – 16 September 2011
15 – 28 October 2011

Pantanal Safari and Iguacu Falls

Set Departures - Led by Local Naturalist Guides

Greater in area than Belgium, the vast seasonally flooded plain of the Pantanal is justly famed as being the most impressive wildlife location in South America, and is the best location in South America to see jaguars. In addition to jaguars, the Pantanal has much to interest the wildlife enthusiast: ostrich-like rhea, giant otters, jabiru stork, capybara, coatimundi, crab-eating fox, burrowing and pygmy owls, puma, tamandua and giant anteater among others. Birds such as the toco toucan and the highly endangered hyacinth macaw (the world's largest parrot) are generally seen in good numbers, making perfect subjects for colourful pictures.

This tour visits remote areas in both the southern and northern Pantanal, including a jaguar rich area of the northern Pantanal, and an intimate, wildlife-rich ranch reached by light aircraft in the southern Pantanal.

The tour visits a habituated family of giant river otters and also offers very good chances of seeing tapirs and giant anteaters at close quarters. Viewing towers are positioned close to fruiting trees giving good sightings of fruit-eating birds and primates including brown capuchin monkeys, black and gold howler monkeys, and silvery marmosets.

The tour ends with three nights at the Orient Express owned Hotel Das Cataratas, the only hotel within Iguacu National Park. Situated on the border between Brazil and Argentina, the falls are made up of 275 separate waterfalls which occupy an area 3 miles wide and 80 metres high, flanked by lush rainforest. There are national parks on both sides of the falls, with the Brazilian national park founded in 1939 and designated a UNESCO World Heritage Site in 1986, and during this tour both sides of the falls will be explored.

The variety of wildlife seen on this tour plus the potential of seeing some of South Americas most elusive big mammals, and the might Iguacu Falls, makes this tour ideal for general wildlife enthusiasts, wildlife photographers and big cat aficionados.



Pantanal Safari and Iguacu Falls

14 DAYS – LED BY LOCAL NATURALIST GUIDES

TOUR IN BRIEF

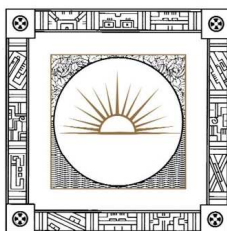
- Day 01: Depart LONDON HEATHROW on TAM AIRLINES.
- Day 02: Arrive SAO PAULO and connect with flight to CUIABA. Transfer to lodge. O/n SOUTHWILD PANTANAL (PANTANAL WILDLIFE CENTRE), FB.
- Day 03: Transfer to Jaguar Research Centre. Afternoon boat trip to spot Jaguars. O/n SOUTHWILD JAGUAR CAMP (JAGUAR RESEARCH CENTRE), FB.
- Day 04: Full day search for Jaguars. O/n SOUTHWILD JAGUAR CAMP, FB.
- Day 05: Full day search for Jaguars. O/n SOUTHWILD JAGUAR CAMP, FB.
- Day 06: Boat transfer to PORTO JOFRE and charter flight to Barranco Alto. Afternoon activities. O/n FAZENDA BARRANCO ALTO, FB.
- Day 07: Full day guided activities. O/n FAZENDA BARRANCO ALTO, FB.
- Day 08: Full day guided activities. O/n FAZENDA BARRANCO ALTO, FB.
- Day 09: Full day guided activities. O/n FAZENDA BARRANCO ALTO, FB.
- Day 10: Early morning activities. Charter flight to CAMPO GRANDE and connect with late afternoon flight to FOZ DO IGUACU. Met on arrival and transfer to hotel. O/n HOTEL DAS CATARATAS, BB.
- Day 11: Guided visit of the Brazilian falls with Devil's Throat boat ride. Afternoon at leisure. O/n HOTEL DAS CATARATAS, HB.
- Day 12: Full day guided visit of the Argentinean falls with lunch. O/n HOTEL DAS CATARATAS, BB.
- Day 13: Morning at leisure. Afternoon transfer to FOZ DO IGUACU and fly to SAO PAULO. Connect with late evening flight home.
- Day 14: Afternoon arrival into LONDON HEATHROW.

<i>Departure Dates from London</i>	<i>Adult Price</i>	<i>Single Supplement</i>
16 July 2011	£5761	£660
03 September 2011	£5605	£660
15 October 2011	£5605	£660

Minimum group size 2, max 9.

NB: Prices include full board accommodation, Economy flights, transfers, guided activities and the peace of mind of knowing that your payments are fully protected by ATOL. Not included are drinks from the bar, gratuities, insurance or departure taxes.

NB: The per person cost in twin/double accommodation without a visit to Iguacu falls is £4,986 in July and £4,830 in September/October.



PANTANAL SAFARI AND IGUACU FALLS

DETAILED ITINERARY

Day 01 Depart LONDON HEATHROW at 2205 on TAM AIRLINES flight JJ8085.

Day 02 Arrive SAO PAULO at 0535 and connect with flight to CUIABA (via CAMPO GRANDE), arriving 1250. Met on arrival by naturalist guide and transfer to your lodge in the Pantanal.

The Pantanal is a UK-sized mosaic of seasonally-flooded savannahs and tropical forests that offer the finest wildlife viewing in Latin America. It harbours a record 82 species of large birds, 3,000-5,000 individuals of which can be seen on a one-hour vehicle ride on the raised Transpantaneira Road, the only road into the Pantanal, which begins one hour's drive from Cuiaba. Other wildlife includes giant otter, capybara, giant anteater, tapir, three monkey species, hyacinth macaw, 400 more bird species and tens of thousands of caimans.



O/n SOUTHWILD PANTANAL (formerly PANTANAL WILDLIFE CENTRE), FB. Owned and operated by professional wildlife biologists, the lodge is found 2.5 kms off the Transpantaneira Road, on the forested banks of the wildlife-rich Pixaim River. With air-conditioned rooms and accessible riverine forest, PWC offers some of the Pantanal's best accommodation for serious wildlife enthusiasts and photographers. Your stay includes daily excursions, including boat outings, perhaps to see South America's tamest giant otters, often in a silent, electric river catamaran (excellent for tripods and long lens photography). Mobile canopy towers are often strategically placed at fruiting and flowering trees. Other possibilities include horse riding, cattle drives, guided trail walks, and mammal spotlighting.



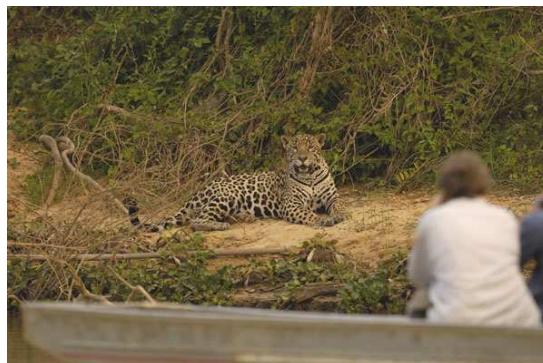
(2).../ QUEST FOR THE JAGUARS OF BRAZIL

Day 03

Continue driving to the end of the Transpantaneira to the village of PORTO JOFRE on the CUIABA RIVER. Board boat to the Jaguar Research Centre in the middle of the Pantanal's highest density area for jaguars. O/n SOUTHWILD JAGUAR CAMP (formerly THE JAGUAR RESEARCH CENTRE), FB.



The SouthWild Jaguar Camp is focussed on securing reliable and quality jaguar sightings for all its guests. Jaguars have historically been one of the most difficult of the big cats to see in the wild with sightings often restricted to brief glimpses in the jungles and rainforests of Latin America. However, the jaguar camps have located themselves in an area of Brazil's Pantanal where jaguars are found in very high numbers and are seemingly very comfortable with human presence. Since 2007, Reef and Rainforest clients have seen over 300 jaguars whilst staying at the JRC with a 100% success rate in 2010, a real testament to the effort put in to find this king of big cats. Some sightings have been brief whereas others have lasted for hours with many visitors returning with hundreds of photos and hours video of rarely seen behaviour such as hunting, swimming, mating and territorial fights.



The most common kills have been caiman taken at the river edge but capybara have been taken in the water and one lucky Reef and Rainforest client witnessed a stand-off between a large male and group of giant river otters that it had just tried to ambush. Key to the jaguar camps success is having all boats linked by radio and scouring different areas of the river bank. They aim to have three boats searching for jaguars for at least five hours each day with scout boats used to make up numbers when there are fewer guest boats.

(3).../ PANTANAL SAFARI AND IGUACU FALLS

Much of your time will be spent in and around the 270,000-acre MEETING-OF-THE-WATERS STATE PARK, founded in December 2004, this is one of the largest and most pristine protected areas in the 50 million acres of the Pantanal. The riverine habitat, which is ideal for accessing the core of the park, no longer includes any ranching and the numerous jaguars that roam the area are free to hunt their favourite dry-season prey the abundant, four-to-seven feet long caimans and plump, 120-pound capybaras.



Over the years, the SouthWild Jaguar Camp (Jaguar Research Center) has shifted its location between a series of tented camps and large houseboats but has finally settled in a 50,000 acre ranch sandwiched between the Meeting of the Waters State Park and the privately owned Panthera Pantanal Project jaguar reserve. The 16 safari-styled tents of the jaguar camp offer comfortable accommodation with some trails through the ranch, however, most of your time will be spent on the water searching for jaguars. This has to be one of the best wildlife camps in the whole of South America and as close as you can get to an Africa safari experience in the New World.

SouthWild Jaguar Camp undoubtedly offers the best chance of observing jaguars anywhere in the world. As with all wildlife sightings, there is a large element of luck involved and factors such as weather can limit the number and quality of sightings. Whilst searching for jaguars you will have plenty of time to see many of the Pantanal's other great wildlife highlights such as capybaras, caiman, otters, monkeys and a huge number of birds.



- Day 04 Daily tours and small group excursions with your naturalist guide (details to be decided on the spot). O/n SOUTHWILD JAGUAR CAMP, FB.
- Day 05 Daily tours and small group excursions with your naturalist guide (details to be decided on the spot). O/n SOUTHWILD JAGUAR CAMP, FB.
- Day 06 Last opportunity for jaguar spotting as you return by boat to PORTO JOFRE and fly 70 minutes by chartered light aircraft to BARRANCO ALTO.

(4).../ PANTANAL SAFARI AND IGUACU FALLS

O/n FAZENDA BARRANCO ALTO, FB. One of the smallest and most personal lodges in the Pantanal, Barranco Alto offers only four rooms. The rooms are fairly simple but are equipped with private bathroom, fan, air conditioning and a private veranda. Outside there is a shaded patio built around a large mango tree with hammocks, tables and chairs. From here there are open views to the Rio Negro and it is not uncommon to see peccaries, rheas and capybaras grazing on the grassland by the river.



A particular highlight here are the Swiss owners: Lucas, Marina and their young family. Biologists and ardent conservationists, they often guide guests and are eager to share their love and knowledge of the Pantanal. They have carried out research on the local population of giant otters that inhabit the RIO NEGRO, on which the ranch is situated. Therefore the otters are used to human contact and allow one to approach quite closely. Jaguars are here but it is still rare to see more than their tracks; puma and ocelot are also sometimes seen.



The food is prepared by two talented local cooks who have developed over the years a delicious mix of local and international cuisine. Most of the lettuce, vegetables and fruits are grown on the ranch and the bread, jams, cheese, and many other foods are home made.

Day 07

Full day of guided activities in small group. The lodge provides a full but flexible programme (early starts). You might ride horses, take an electric boat ride, paddle a canoe or enjoy a nature walk, all with guide. Nocturnal spotlighting is also offered. The guiding is usually shared



between a resident biologist guide, Lucas, Marina and Fernando, a local Pantaneiro guide. There is also often an opportunity to assist one of the resident biologists with their fieldwork. Current research projects are on giant otters, giant anteaters, jaguars, ecology (seed dispersal), biodiversity and geology (salt lakes),

(5).../ PANTANAL SAFARI AND IGUACU FALLS

though researchers are not always present at the ranch. O/n FAZENDA BARRANCO ALTO, FB.

Day 08 Full day of guided activities in small group. O/n FAZENDA BARRANCO ALTO, FB.

Day 09 Full day of guided activities in small group. O/n FAZENDA BARRANCO ALTO, FB.

Day 10 Early morning guided activities in small group. In the early afternoon fly (55 mins) by light aircraft to CAMPO GRANDE. Depart at 1645 on TRIP AIRLINES flight 8R 5439 to FOZ DO IGUACU, arriving at 21:15 (with short stops in Maringa and Londrina en route). Airport shuttle to hotel.

O/n HOTEL DAS CATARATAS, BB. O/n HOTEL DAS CATARATAS, BB. The only hotel located within the Brazilian section of the IGUACU NATIONAL PARK, and only a few hundred metres from the first set of cascades.



In front of the hotel there is a footbridge with a panoramic view heading toward the

lookout area, quite close to the Devils Throat, where the water flow is greatest. The IGUACU NATIONAL PARK preserves the last continuous area of tropical forest in Southern Brazil and is home to 340 bird and 40 mammal species, including the jaguar, the ocelot and the capybara.

Day 11

Situated on the border between Brazil and Argentina, the falls are made up of 275 separate waterfalls which occupy an area 3 miles wide and 80 metres high, flanked by lush rainforest. There are national parks on both sides of the falls, with the Brazilian national park founded in 1939 and designated a UNESCO World Heritage Site in 1986.

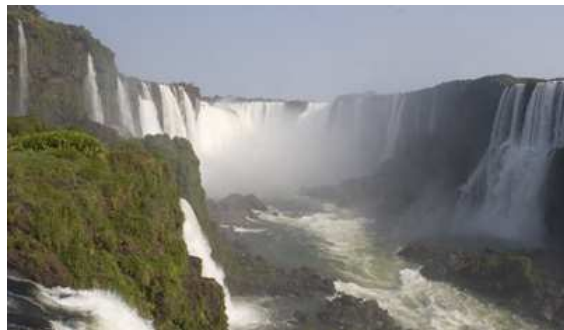


In the morning explore the Brazilian side of the falls with your private guide. A scenic walk provides you with a panoramic view of the whole falls. See smaller waterfalls until reaching the biggest spectacle: the Garganta do Diabo or 'DEVILS THROAT', where two river branches meet with one another and free fall, often to be framed by several rainbows. You will also go on a 'MACUCO SAFARI' where you can view the falls from below on the

(6).../ PANTANAL SAFARI AND IGUACU FALLS

river aboard a RIB boat, after taking an open wagon on a guided 2km ride through the rainforest learning of the flora and fauna. Watch out: you will get soaked on the boat! The afternoon is at leisure to relax or explore the Brazilian falls on your own. Dinner is included in the hotel today. O/n HOTEL DAS CATARATAS, HB.

Day 12: After breakfast depart from the hotel for a private guided excursion to the Argentinean side of the Falls. After a short drive you will cross the TANCREDO NERVES BRIDGE over the IGUAZU RIVER that forms the border between ARGENTINA and BRAZIL. Once in ARGENTINA travel up the scenic highway to the ARGENTINEAN IGUAZU NATIONAL PARK to visit the UPPER ARGENTINE FALLS and the SAN MARTIN FALLS.



One can get closer to the falls on the Argentinean side. Setting out from the visitors centre, there are trails through the forest with suspended footbridges and several lookouts. Lunch is included today. O/n HOTEL DAS CATARATAS, BB.

Day 13: The morning is at leisure to relax, or arrange OPTIONAL activities such as a visit to the Bird Park, or Itaipu Dam. In the afternoon transfer to FOZ DO IGUACU in time to catch TAM flight JJ3168 at 1930 to SAO PAULO INTERNATIONAL, arriving 2120. Connect with TAM flight JJ8084 at 2340 to LONDON.

Day 14 Arrive LONDON HEATHROW at 1500.

NB: Extensions are possible to other areas of Brazil such as Bonito, Rio De Janeiro, southern Amazon and the Atlantic coast - please call for details.



IMPORTANT NOTES TO ACCOMPANY THE ABOVE ITINERARY

NB: Jaguars are one of South America's most elusive mammals and most research biologists have only seen a handful in their lifetime. The SouthWild Jaguar Camp undoubtedly offers the best chance of observing these amazing animals anywhere in the world. As with all wildlife sightings, there is a large element of luck involved and factors such as weather can limit the number and quality of sightings. However, your time here will still reveal many of the Pantanal's other great wildlife highlights such as capybaras, caiman, giant river otters, monkeys and a huge amount of birds.

NB: Extensions can be taken to visit other areas of Brazil. This tour can also be followed on a private basis, prices on request.

NB: This tour will not have a specific tour leader throughout, however in each location you will be accompanied by a local naturalist guide.

NB: All itineraries are subject to change without notice to take into account possible airline flight schedule changes which can take place before departure date or during the tour, and other operational factors.

NB: The quoted price for the above itinerary is based on current airline fares (both international and domestic), current exchange rates, fuel surcharges and flight taxes. These (and other tour costs) may be subject to unanticipated increases beyond our control at short notice, either before or after you have booked the tour, in which case the price would need to be revised accordingly.

NB: This tour involves some travel in remote areas. This adds to the adventure and increases the opportunity to enjoy a true wildlife experience. However, due to terrain, weather, road conditions, and other factors beyond our control, some elements of the tour may have to be altered. Times of some activities may need to be changed or even cancelled due to the conditions. If an activity is cancelled it will usually be replaced with an alternative activity that is more appropriate for the conditions. Advance notice will be given for any changes where possible, although at times changes may need to be made whilst the tour is in progress.

NB: Prices are based on a specific airlines and specific economy seating classes. Flights are booked on an ad hoc basis and so early booking is recommended to take advantage of the cheapest fare availability. Prices may rise if a more expensive seat class needs to be booked. Please call for information on price variations for using alternative airlines or for seat upgrades.

NB: Some service providers may require that guests sign an indemnity waiver form and may refuse services if these forms are not signed. Reef and Rainforest Tours cannot give refunds for services not provided due to a refusal to sign such forms.

NB: Adequate insurance cover is mandatory. Please supply us with details of your cover.

Reef and Rainforest Tours Ltd.

A7 Dart Marine Park, Steamer Quay, Totnes, Devon, TQ9 5AL, UK

Tel: ++ 44 (0)1803 866965 Fax: ++ 44 (0)1803 865916

Websites: www.reefandrainforest.co.uk www.familytours.co.uk

E-mail: mail@reefandrainforest.co.uk

