

Reef and Rainforest Tours



Pantanal Jaguar Safari

Set Departures - Led by Local Naturalist Guides

18 - 30 September 2009

7 - 19 October 2009

16 - 28 June 2010

14 - 26 July 2010

18 - 30 August 2010

1 - 13 September 2010

22 September - 4 October 2010

13 - 25 October 2010

Pantanal Jaguar Safari

Set Departures - Led by Local Naturalist Guides

The jaguar is one of the most elusive big cats and one which few people have the privilege of seeing. However, on this group tour sightings of jaguars are virtually guaranteed!

The key to the tour's success is that it visits remote areas in both the southern and northern Pantanal, including a jaguar rich area of the northern Pantanal that employs a team of trackers to locate jaguars, study their ecology and direct the group to areas with the best sightings. In the last two years more than 100 jaguars have been seen by Reef and Rainforest clients with some lucky clients also seeing ocelot and puma.

Greater in area than Belgium, the vast seasonally flooded plain of the Pantanal is justly famed as being the most impressive wildlife location in South America. In addition to jaguars, the Pantanal has much to interest to the wildlife enthusiast: ostrich-like rhea, jabiru stork, capybara, coatimundi, crab-eating fox, burrowing and pygmy owls, coatimundi, puma, tamandua and giant anteater among others. Birds such as the toco toucan and the highly endangered hyacinth macaw (the world's largest parrot) are generally seen in good numbers, making perfect subjects for colourful pictures.

The tour visits a habituated family of giant river otters and also offers very good chances of seeing tapirs at close quarters. Viewing towers are positioned close to fruiting trees giving good sightings of fruit-eating birds and primates including Brown Capuchin Monkeys, Black and Gold Howler Monkeys, and Silvery Marmosets.

The variety of wildlife seen on this tour plus the potential of seeing some of South America's most elusive big mammals makes this tour ideal for general wildlife enthusiasts, wildlife photographers and big cat aficionados.



Pantanal Jaguar Safari

13 DAYS – LED BY LOCAL NATURALIST GUIDES

TOUR IN BRIEF

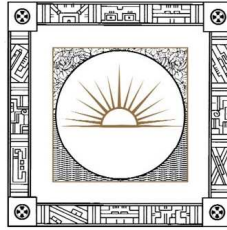
- Day 01: Depart LONDON HEATHROW on TAM AIRLINES.
- Day 02: Arrive SAO PAULO and connect with flight to CAMPO GRANDE. Light aircraft flight over the Pantanal to Barranco Alto. O/n FAZENDA BARRANCO ALTO, FB.
- Day 03: Full day guided activities. O/n FAZENDA BARRANCO ALTO, FB.
- Day 04: Full day guided activities. O/n FAZENDA BARRANCO ALTO, FB.
- Day 05: Full day guided activities. O/n FAZENDA BARRANCO ALTO, FB.
- Day 06: Fly to CAMPO GRANDE and connect with flight to CUIABA. Road transfer to lodge. O/n PANTANAL WILDLIFE CENTRE, FB.
- Day 07: Full day guided activities. O/n PANTANAL WILDLIFE CENTRE, FB.
- Day 08: Transfer to Jaguar Research Centre. Afternoon boat trip to spot Jaguars. O/n JAGUAR RESEARCH CENTRE, FB.
- Day 09: Full day search for Jaguars. O/n JAGUAR RESEARCH CENTRE, FB.
- Day 10: Full day search for Jaguars. O/n JAGUAR RESEARCH CENTRE, FB.
- Day 11: Return to Pantanal Wildlife Centre. Afternoon activities. O/n PANTANAL WILDLIFE CENTRE, FB.
- Day 12: Tfr to CUIABA and fly to SAO PAULO. Connect with flight home.
- Day 13: Arrive LONDON HEATHROW.

<i>Departure Dates from London</i>	<i>Adult Price</i>	<i>Single Supplement</i>
18 September 2009	£4850	TBC
7 October 2009	£4850	TBC
16 June 2010	£4850	TBC
14 July 2010	£4890	TBC
18 August 2010	£4890	TBC
1 September 2010	£4890	TBC
22 September 2010	£4850	TBC
13 October 2010	£4850	TBC

Minimum group size 2, max 9.

NB: Prices include full board accommodation, Economy flights, transfers, guided activities and the peace of mind of knowing that your payments are fully protected by ATOL. Not included are drinks from the bar, gratuities, insurance or departure taxes.

NB: Extensions are possible to other areas of Brazil such as Iguacu Falls, Bonito, Rio De Janeiro and the Atlantic coast - please call for details.



PANTANAL JAGUAR SAFARI

DETAILED ITINERARY

Day 01 Depart LONDON HEATHROW at 2205 on TAM AIRLINES flight JJ8085.

Day 02 Arrive SAO PAULO GUARULHOS INTERNATIONAL AIRPORT at 0600. Connect with TAM flight JJ3804 at 0900 to CAMPO GRANDE, arriving 0940. Board charter flight by small plane to BARRANCO ALTO. O/n FAZENDA BARRANCO ALTO, FB.

One of the smallest and most personal lodges in the Pantanal, Barranco Alto offers only four rooms (two more planned). The rooms are fairly simple but are equipped with private bathroom, fan, air conditioning and a private veranda.



A particular highlight here are the Swiss owners: Lucas, Marina and their young family. Biologists and ardent conservationists, they often guide guests and are eager to share their love and knowledge of the Pantanal. Lucas carried out research on the local population of giant otters that inhabit the RIO NEGRO, on which the ranch is situated. Therefore the otters are used to human contact and allow one to approach quite closely; giant anteaters are also fairly common here. Jaguars are here but it is still rare to see more than their tracks; puma and ocelot can sometimes be seen at night.

The food is prepared by two talented local cooks who have developed over the years a delicious mix of local and international cuisine. Most of the vegetables and fruit are grown on the ranch and the bread, jams, cheese, and many other foods are home made.

Day 03 Full day of guided activities, the lodge provides a full but flexible programme. Enjoy game drives in the lodge's open-sided Landcruiser or explore by horseback. Travel the waterways by electric boat with your guide or take canoes to explore the waterways in silence (the best way to see jaguars). O/n FAZENDA BARRANCO ALTO, FB.



Day 04

Full day of guided activities. Perhaps enjoy an early morning walking safari with your guide and take a game drive in the afternoon. Nocturnal wildlife walks with spotlights are also offered, as are cultural activities and swimming in the river. O/n FAZENDA BARRANCO ALTO, FB.



Day 05

Full day of guided activities. O/n FAZENDA BARRANCO ALTO, FB.

Day 06

Charter flight back to CAMPO GRANDE. Board TAM flight JJ3592 at 1545 to CUIABA, arriving 1650. Met by naturalist guide and transfer (stopping to observe wildlife en route) along the TRANSPANTANEIRA ROAD to your lodge.

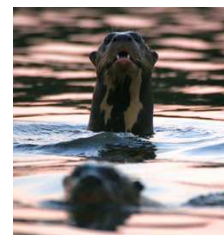
The Pantanal is a UK-sized mosaic of seasonally-flooded savannahs and tropical forests that offer the finest wildlife viewing in Latin America. It harbours a record 82 species of large birds, 3,000-5,000 individuals of which can be seen on a one-hour vehicle ride on the raised Transpantaneira Road, the only road into the Pantanal, which begins one hour's drive from Cuiaba. Other wildlife includes giant otter, capybara, giant anteater, tapir, three monkey species, hyacinth macaw, 400 more bird species and tens of thousands of caimans.



O/n FAZENDA SANTA TEREZA (PANTANAL WILDLIFE CENTRE), FB. Owned and operated by professional wildlife biologists, the lodge is found 2.5 kms off the Transpantaneira Road, on the forested banks of the wildlife-rich Pixaim River. With air-conditioned rooms and accessible riverine forest, PWC offers some of the Pantanal's best accommodation for serious wildlife enthusiasts and photographers.



Your stay includes daily excursions, including boat outings, perhaps to see South America's tamest giant otters, often in a silent, electric river catamaran (excellent for tripods and long lens photography). Mobile canopy towers are strategically placed at fruiting and flowering trees. Other possibilities include



horse riding, cattle drives, guided trail walks, research lectures, mammal spotlighting and scanning the night sky using a star chart.

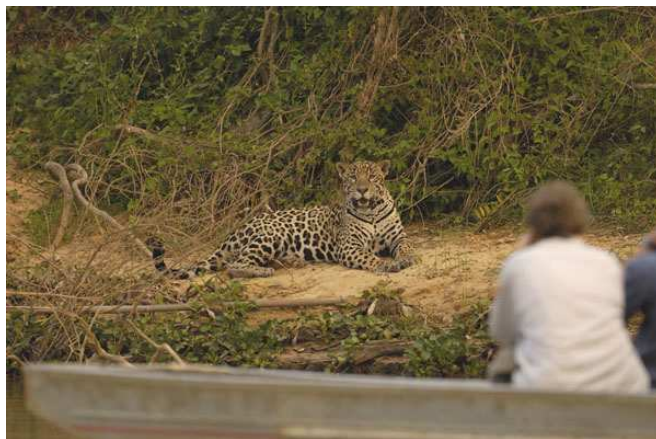
Day 07 Full day of excursions with your naturalist guide. O/n FAZENDA SANTA TEREZA (PANTANAL WILDLIFE CENTRE), FB.

Day 08 Drive to the end of the Transpantaneira Road and board boat to your lodge in the middle of the Pantanal's highest density area for jaguars, in the heart of the Meeting-of-the-Waters State Park. O/n THE JAGUAR RESEARCH CENTRE, FB.

The Jaguar Research Centre (JRC) is based around a house boat (*flotante*) with an open dining area and small air-conditioned lounge. Accommodation is provided in safari tents with good beds, wash basin, fan, mosquito net and earth closets.



The 270,000-acre MEETING-OF-THE-WATERS STATE PARK, founded in December 2004, is one of the largest and most pristine protected areas in the 50 million acres of the Pantanal. It includes three private ranches, all of which stopped cattle ranching a number of years ago. The wildest part of this park is an abandoned 70,000-acre ranch that includes most of the forests and savannah along the Three Brothers River. The riverine habitat, which is ideal for accessing the core of the park, no longer includes any ranching or cattle. The numerous jaguars that roam the area are free to hunt their favourite dry-season prey the abundant, four-to-seven feet long caimans and plump, 120-pound capybaras.



Local state law prohibits the erection of new buildings in the park which is why the camp consists of a boat and safari tents. This also allows the camp to move each season in response to changes in the patterns of jaguar activity, ensuring that it is always in the best location for jaguar sightings.



Visitors can walk on trails through the private forest, but the main advantage of being anchored here comes from being able to use small, open, aluminium boats to cruise up and down the river visiting side channels to monitor jaguar movements and habitat use.

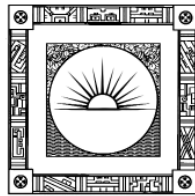


The lodge is continuing to intensify jaguar research and monitoring in the core of the park, using its floating hotel/research centre as the base from which to send out small, radio-equipped scout boats to search for fresh jaguar signs and for the jaguars themselves along this river and adjacent wild rivers. Over the last two years (2007 and 2008), Reef and Rainforest clients have seen over 100 jaguars whilst staying at the camp, a testament to the effort put in to find this king of big cats.



Jaguars are one of South America's most elusive mammals and most research biologists have only seen a handful in their lifetime. The JRC undoubtedly offers the best chance of these amazing animals anywhere in the world. As with all wildlife sightings, there is a large element of luck involved and factors such as weather can limit the number and quality of sightings. However, your time here will still reveal many of the Pantanal's other great wildlife highlights such as capybaras, caiman, giant river otters, monkeys and a huge amount of birds.

- Day 09 Daily tours and excursions with your naturalist guide (details to be decided on the spot). O/n THE JAGUAR RESEARCH CENTRE, FB.
- Day 10 Daily tours and excursions with your naturalist guide (details to be decided on the spot). O/n THE JAGUAR RESEARCH CENTRE, FB.
- Day 11 Last opportunity for jaguar spotting as you return by boat and road to the Pantanal Wildlife Centre in time for lunch. Afternoon guided excursion. O/n FAZENDA SANTA TEREZA (PANTANAL WILDLIFE CENTRE), FB.
- Day 12 Drive to CUIABA in time to catch TAM flight JJ3805 at 1645 (via CAMPO GRANDE) to SAO PAULO, arriving 2120. Connect with TAM flight JJ8084 at 2345 to LONDON.
- Day 13 Arrive LONDON HEATHROW at 1535.



IMPORTANT NOTES TO ACCOMPANY THE ABOVE ITINERARY

NB: Jaguars are one of South America's most elusive mammals and most research biologists have only seen a handful in their lifetime. The Jaguar Research Centre undoubtedly offers the best chance of observing these amazing animals anywhere in the world. As with all wildlife sightings, there is a large element of luck involved and factors such as weather can limit the number and quality of sightings. However, your time here will still reveal many of the Pantanal's other great wildlife highlights such as capybaras, caiman, giant river otters, monkeys and a huge amount of birds.

NB: Extensions can be taken to visit other areas of Brazil. This tour can also be followed on a private basis, prices on request.

NB: This tour will not have a specific tour leader throughout, however in each location you will be accompanied by a local naturalist guide.

NB: All itineraries are subject to change without notice to take into account possible airline flight schedule changes which can take place before departure date or during the tour, and other operational factors.

NB: The quoted price for the above itinerary is based on current airline fares (both international and domestic), current exchange rates, fuel surcharges and flight taxes. These (and other tour costs) may be subject to unanticipated increases beyond our control at short notice, either before or after you have booked the tour, in which case the price would need to be revised accordingly.

NB: This tour involves some travel in remote areas. This adds to the adventure and increases the opportunity to enjoy a true wildlife experience. However, due to terrain, weather, road conditions, and other factors beyond our control, some elements of the tour may have to be

altered. Times of some activities may need to be changed or even cancelled due to the conditions. If an activity is cancelled it will usually be replaced with an alternative activity that is more appropriate for the conditions. Advance notice will be given for any changes where possible, although at times changes may need to be made whilst the tour is in progress.

NB: Prices are based on a specific airline and specific economy seating classes. Flights are booked on an ad hoc basis and so early booking is recommended to take advantage of the cheapest fare availability. Prices may rise if a more expensive seat class needs to be booked. Please call for information on price variations for using alternative airlines or for seat upgrades.

NB: Adequate insurance cover is mandatory. Please supply us with details of your cover.



Reef and Rainforest Tours Ltd.

A7 Dart Marine Park, Steamer Quay, Totnes, Devon, TQ9 5AL, UK

Tel: ++ 44 (0)1803 866965 Fax: ++ 44 (0)1803 865916

Websites: www.reefandrainforest.co.uk www.familytours.co.uk

E-mail: mail@reefandrainforest.co.uk

