

Reef & Rainforest



Special Itinerary:

Ultimate Namibia Wildlife & Landscapes

14 Days Small Group Tour

Various Guaranteed Departures 2012



Ultimate Namibia Wildlife & Landscapes Small Group Tour

Namibia, is world-renowned for its breath-taking scenic beauty, endless horizons, towering dunes, the tales of survival and adventure along the wild Skeleton Coast, diverse and fascinating peoples and its desert-adapted wildlife living against a wonderfully photogenic backdrop.

This superb tour incorporates the scenic and wildlife highlights of Namibia. Your experience will be further enhanced by your guide who will add a deeper insight into the flora, fauna, geology and fascinating cultures of this magnificent country, to be enjoyed with a small group of like-minded travellers.

The itinerary is suitable for everyone with a love of nature and we're confident you will come away spellbound by Namibia's great wilderness.



Departure Dates:

2012

31st March – 13th April 2012

12th May – 25th May 2012

16th June - 29th June 2012

14th July - 27th July 2012

11th August – 24th August 2012

6th October – 19th October 2012

3rd November 16th November 2012

Departures are **GUARANTEED TO RUN** with a minimum of two people, and have a maximum of **TEN** participants.

We would be pleased to arrange pre and/or post-tour extensions on request.



ULTIMATE NAMIBIA WILDLIFE & LANDSCAPES SMALL GROUP TOUR

LED BY LOCAL GUIDE

ITINERARY IN BRIEF

- Day 01 Depart **LONDON**.
- Day 02 Arrive JOHANNESBURG. Connect with flight to **WINDHOEK**. Transfer to the hotel. O/n OLIVE GROVE, BB.
- Day 03 Drive through the scenic Khomas Hochland and down the great Escarpment into the **NAMIB DESERT**. Visit Sesriem Canyon. O/n HOODIA DESERT LODGE, FB.
- Day 04 Today explore the stunning **NAMIB NAUKLUFT NATIONAL PARK**, and **SOSSUSVLEI**. O/n HOODIA DESERT LODGE, FB.
- Day 05 Scenic drive north to **SWAKOPMUND**. Afternoon to explore the town. O/n A SWAKOPMUND GUEST HOUSE, FB
- Day 06 Morning seal and dolphin catamaran cruise from **WALVIS BAY**. Return to Swakopmund. Afternoon at leisure. OPTIONAL various excursions available. O/n A SWAKOPMUND GUEST HOUSE, FB.
- Day 07 Scenic drive to **DAMARALAND**. Visit **TWYFELFONTEIN** rock engravings (World Heritage Site), Burnt Mountain and the Organ Pipes. O/n CAMP KIPWE, FB.
- Day 08 Morning 4x4 excursion along the Aba Huab River Valley in search of **DESERT ADAPTED ELEPHANTS**. Afternoon guided walk or simply relax and enjoy the beautiful scenery. O/n CAMP KIPWE, FB.
- Day 09 Scenic drive to western **ETOSHA NATIONAL PARK**, visiting the Petrified Forest en route. Afternoon game drive or enjoy watching wildlife at the camp's waterhole. Evening game drive for nocturnal wildlife. O/n DOLOMITE CAMP, FB.
- Day 10 Game drive across **ETOSHA NATIONAL PARK** to Okaukuejo (lunch included en route). Afternoon game viewing with guide by vehicle or at Okaukuejo's famous waterhole. O/n OKAUKUEJO RESORT, FB.
- Day 11 Day of safari in **ETOSHA NATIONAL PARK**. O/n OKAUKUEJO RESORT, FB.
- Day 12 Drive out of the southern exit of **ETOSHA NATIONAL PARK** and continue towards the Omboboko Mountains and **OKONJIMA**. Guided afternoon excursion with **AFRICAT** where you may track leopard, wild dog, or hyena in the reserve and visit the leopard and cheetah rehabilitation projects. Visit the night hide. O/n OKONJIMA BUSH CAMP, FB.
- Day 13 Early morning guided excursion with AfriCat at **OKONJIMA**. Return to Windhoek. Depart **WINDHOEK** on flight to JOHANNESBURG. Connect with flight to LONDON.
- Day 14 Arrive **LONDON**.



ULTIMATE NAMIBIA WILDLIFE & LANDSCAPES DETAILED ITINERARY

Day 01 Depart LONDON HEATHROW on flight to JOHANNESBURG.

Day 02 Arrive JOHANNESBURG. Connect with flight to WINDHOEK INTERNATIONAL AIRPORT, NAMIBIA. Met on arrival and transfer to the hotel. O/n OLIVE GROVE (LUXURY ROOM), BB. Olive Grove is a lovely welcoming guesthouse situated close to Windhoek's city centre in the quiet, peaceful suburb of Eros. The alfresco dining terrace, Jacuzzi, plunge pool and broad verandas invite you to unwind and relax under Namibia's open skies. Facilities also include a comfortable lounge with guest internet, and the individual



guest rooms cater to every need of the discerning traveller. The emphasis remains one of simplicity and elegance. You have the option of having a restful dinner at the hotel, but there are plenty of restaurants to choose from if you prefer to dine out instead.

Day 03 Pick up from the lodge and drive southwest through the scenic Khomas Hochland before you head down the Great Escarpment into the NAMIB DESERT below. A picnic lunch will be served at a scenic location en-route. Arrive at your lodge in the late afternoon where you will stay for two nights whilst you explore the remarkable sights of the Namib Desert with your guide. If there is still time today, your guide will take you to visit SESRIEM CANYON, a nearby geological attraction, or you can relax and soak in the scenic and tranquil surroundings at the lodge. (Contd.../)

(2).../ ULTIMATE NAMIBIA WILDLIFE & LANDSCAPES GROUP TOUR

(Contd.../) Sesriem Canyon has evolved through centuries of erosion by the Tsauchab River which has incised a narrow gorge about 1.5 km long and 30 metres deep into the surrounding conglomerates, exposing the varying layers of sedimentation deposited over millions of years.



The shaded cool depths of the canyon allow pools of water to gather during the rain season and remain for much of the year round. These pools were a vital source of water for early settlers who drew water for their livestock by knotting six (ses) lengths of rawhide thongs (riems) together,

hence the canyon and surrounding area became known as Sesriem.

O/n HOODIA DESERT LODGE, FB. The lodge lies nestled on the banks of the Tsauchab River, overlooked by the impressive Naukluft Mountains and offers comfortable accommodation in thatched and tented bungalows equipped with a private open-air bathroom, air-conditioning, minibar, tea and coffee station and a shaded balcony. The restaurant serves excellent traditional and international cuisine accompanied by a wide selection of South African wines from the underground wine cellar. A wooden walkway leads you to a refreshing swimming pool sculpted into natural rock. This wonderful lodge is a welcomed oasis from which to enjoy your memorable desert experience.

Day 04

Early morning pick up from the lodge for a magical excursion with your guide into the NAMIB NAUKLUFT NATIONAL PARK, entering the park gates at sunrise to capture the dunes whilst the light is soft and shadows accentuate their towering shapes and curves. This area boasts some of the highest free-standing sand dunes in the world. Your guide will give you an insight on the formation of the Namib Desert and its myriad of fascinating creatures and plants that have adapted to survive these harsh environs.



(3).../ ULTIMATE NAMIBIA WILDLIFE & LANDSCAPES GROUP TOUR

(Contd.../) The most frequently visited section of the massive 50,000 km² Namib Naukluft National Park is SOSSUSVLEI, famous for its towering apricot coloured sand dunes which can be reached by following the Tsauchab River valley. Sossusvlei itself is actually a clay pan set amidst these star shaped dunes which stand up to 300 meters above the surrounding plains, ranking them among the tallest dunes on earth. The deathly white clay pan contrasts against the orange sands and forms the endpoint of the ephemeral Tsauchab River, within the interior of the Great Sand Sea.

The river course rises south of the Naukluft Mountains in the Great Escarpment. It penetrates the sand sea for some 55 km before it finally peters out at Sossusvlei, about the same distance from the Atlantic Ocean. Until the encroaching dunes blocked its course around 60,000 years ago, the Tsauchab River once reached the sea; as ephemeral rivers still do in the northern half of the Namib. Sand-locked pans to the west show where the river previously flowed to before dunes shifted its endpoint to where it currently gathers at Sossusvlei. Roughly once a decade rainfall over the catchment area is sufficient to bring the river down in flood and fill the pan. On such occasions the mirror images of dunes and camel thorn trees around the pan are reflected in the water. Sossusvlei is the biggest of four pans in the vicinity. Another, famous for its gnarled and ghostly camel thorn trees, is Deadvlei which can be reached on foot over 1 km of sand. Deadvlei's striking camel thorn trees, dead for want of water, still stand erect as they once grew. They survived until about 900 years ago when the sand sea finally blocked the river from occasionally flooding the pan.

Once you have explored to your hearts content you can enjoy a relaxing picnic breakfast under the shade of a camel thorn tree. Return to the lodge in the early afternoon for a late lunch, stopping off to view Sesriem Canyon if you haven't already done so the day before. The rest of the afternoon is at your leisure (from experience, this is usually welcomed after an exhilarating morning in the dunes). O/n HOODIA DESERT LODGE, FB. (Contd.../)



(4).../ ULTIMATE NAMIBIA WILDLIFE & LANDSCAPES GROUP TOUR



Day 05

This morning you may have the opportunity to take an OPTIONAL sunrise hot air balloon flight or scenic helicopter/light aircraft flight over the Namib Naukluft National Park.

Then depart on a fascinating drive northwest through awesome and ever changing desert landscapes of the Namib Naukluft National Park, including the impressive Gaub and Kuiseb canyons. Meet the coast at the port town of Walvis Bay and then continue north to SWAKOPMUND where you can enjoy the pleasant seaside location and cooler coastal air for your next two nights. There will be time this afternoon to wander around town and along the waterfront on foot if appeals, before heading off for dinner at the popular Tug Restaurant by the jetty which specialises in fresh seafood. Swakopmund resembles a small, German coastal resort nestled between the desert and the sea. It boasts a charming combination of German colonial architecture blended with good hotels, shops, restaurants, museums, craft centres, galleries and cafés. Although the sea is normally cold for swimming there are pleasant beaches and the cooler climate is refreshing after the time spent in the desert.

NOTE: As an alternative to the drive from Hoodia Desert Lodge to Swakopmund you may like to take an OPTIONAL scenic light aircraft flight over Sossusvlei and along the Diamond Coast, allowing you a birds eye view over the dune sea, abandoned mining camps, shipwrecks, Sandwich Harbour and salt pans before you land at Swakopmund Airport. Your guide will drive to meet up with you in Swakopmund later in the day. Though it is not inexpensive at around £320 per person (please ask us for a definitive quote), this flight is phenomenally beautiful and comes highly recommended.

O/n A SWAKOPMUND GUESTHOUSE, FB. During your two nights in Swakopmund you will be accommodated at a charming and welcoming guesthouse conveniently located just minutes walk from the centre of town and the waterfront.

(5).../ ULTIMATE NAMIBIA WILDLIFE & LANDSCAPES GROUP TOUR

Day 06

After an early breakfast your guide will drive you along the scenic coastal road back to WALVIS BAY for a memorable seal and dolphin cruise within the outer lagoon and harbour. This is an ideal way of seeing Cape fur seals, heaviside and bottlenose dolphins, pelicans, flamingos and a wide variety of other sea birds. If you are lucky, there is also a chance of seeing whales, leatherback turtles and sunfish. During the course of the cruise snacks will be served along with local sparkling wine and fresh oysters.



You will return to the jetty at roughly 12h30 after which you may like to explore Walvis Bay further before returning to Swakopmund for an afternoon at leisure at your guesthouse or in town. You may also like to partake in some of the many OPTIONAL activities that Swakopmund has to offer. These include camel rides, scenic flights, quad-biking in the dunes, sky diving and more. O/n A SWAKOPMUND GUESTHOUSE, FB.

Day 07

Continue on your safari, heading north and east into the wonderful and diverse region of DAMARALAND. You will pass Namibia's highest mountain, the Brandberg which peaks at 2,573 m above sea level, and take time to view game and absorb the vastness of the scenery along the way. Damaraland is typified by displays of colour, magnificent table topped mountains, rock formations and bizarre-looking vegetation. The present day landscape has been formed by the erosion of wind, water and geological forces which have formed rolling hills, dunes, gravel plains and ancient river terraces. It is the variety and loneliness of the area as well as the scenic splendour which will reward and astound you, giving one an authentic understanding of the word 'wilderness'. (Contd.../)

(6).../ ULTIMATE NAMIBIA WILDLIFE & LANDSCAPES GROUP TOUR



(Contd.../) If time allows this afternoon your guide will take you to visit the nearby attractions and geological sites of TWYFELFONTEIN ROCK ENGRAVINGS (a UNESCO World Heritage Site), Burnt Mountain and the Organ Pipes - if not there is plenty of time to do so tomorrow.

Strewn over a hillside amongst flat-topped mountains of red sandstone, Twyfelfontein's boulders and slabs of red sandstone hold some 2,500 prehistoric engravings that depict wildlife, animal spoor and abstract motifs. It is perhaps the largest and finest collection of petroglyphs in Africa. The engravings show animals such as elephant, giraffe, kudu, lion, rhinoceros, springbok, zebra and ostrich that once used to drink from a fountain at the bottom of the hill. In some cases footprints were engraved instead of hooves or paws. The abstract motifs feature mainly circles. Stone tools and other artifacts found at Twyfelfontein suggest that hunter-gatherers occupied the site over a period of perhaps 7,000 years. These days a local guide accompanies visitors to showcase the rock art. The engravings lie along two circular routes, one an hour's climb and the other 40 minutes longer. Twyfelfontein is one of Namibia's key National Monuments and has recently become a UNESCO World Heritage Site.

The BURNT MOUNTAIN is a rounded hill southwest of the Petrified Forest that seems to 'catch fire' at sunrise and sunset. Its fantastic range of colours comes from a chemical reaction that took place 132 million years ago when molten lava penetrated shale and limestone deposits. In ordinary sunlight it is a dull black. Blackened rubble lies to one side like cinders from the original fire.

The ORGAN PIPES, a mass of basalt slabs in a ravine gouged out by a river, is another geological curiosity in the area. (Contd.../)

(7).../ ULTIMATE NAMIBIA WILDLIFE & LANDSCAPES GROUP TOUR



(Contd.../) O/n CAMP KIPWE, FB. This lodge lies in the heart of Damaraland, ideally located a short drive from the local attractions in the area. The Camp is nestled amongst an outcrop of giant granite boulders, a stones throw away from the ephemeral Aba Huab riverbed where desert adapted elephants often traverse. Each comfortable thatched bungalow is simply but tastefully furnished with en-suite open-air bathroom. In the centre of the camp lies a large alfresco dining area, bar, lounge and reception with an inviting fireplace nearby to relax beside in the evenings. A refreshing swimming pool and sunset lookout with lovely views also complement the Camp.

Day 08

After an early breakfast you will be treated to an exciting 4x4 excursion along the ephemeral Aba Huab River valley to explore this remarkable region and to search for game, including the elusive desert adapted elephants if they are in the area. Damaraland is home to a variety of desert adapted wildlife and hidden desert treasures.



With a requirement to find and consume 300 kg of roughage and 230 litres of water a day, desert adapted elephants' ranges extend from river catchments in northern Kaokoveld as far south as the northern Namib. (Contd.../)

(8).../ ULTIMATE NAMIBIA WILDLIFE & LANDSCAPES GROUP TOUR

(Contd.../) Apart from the Kunene River, seven river courses northwards from the Ugab provide them with possible routes across the desert, right to the Skeleton Coast. The biggest are the Hoarusib, the Hoanib, the Huab and the Ugab Rivers. Desert adapted elephant in Kaokoland and the Namib walk further for water and fodder than any other elephant in Africa. The distances between waterholes and feeding grounds can be as great as 68 km. The typical home range of a family herd is larger than 2,000 km², or eight times as big as ranges in central Africa where rainfall is much higher. They walk and feed at night and rest during the day. To meet their nutritional and bulk requirements they browse on no fewer than 74 of the 103 plant species that grow in their range. Not a separate species or even a subspecies, they are an ecotype unique to Namibia, south of the equator, behaviourally adapted to hyper-arid conditions. Elephant in Mali on the south-western fringe of the Sahara Desert are the only others known to survive in similar conditions.

Return to camp for lunch and this afternoon you may visit Twyfelfontein and other nearby attractions if you haven't already done so, or take a nature walk with your guide, or relax and enjoy some well deserved leisure time. O/n CAMP KIPWE, FB.

Day 09

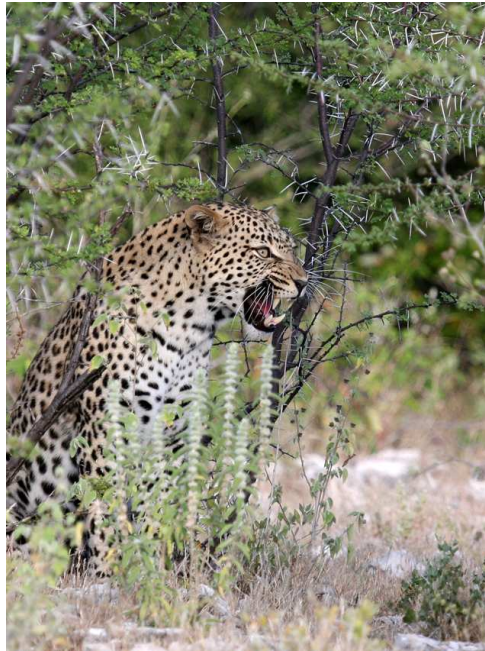
Today, after breakfast, depart to ETOSHA NATIONAL PARK, visiting the Petrified Forest en route. At the Petrified Forest you will find huge trees that turned to stone 280 million years ago. Broken into segments but aligned, they are clearly recognisable as fallen trees, some as long as 45m and 1.2m in diameter, complete with wood grain and growth rings. It is the biggest accumulation of petrified logs in southern Africa. Floodwaters uprooted the trees elsewhere and carried them to their present position towards the end of an ice age on the Gondwana super continent. The trees were conifers, early conifers, which are now extinct.

Enter the Etosha National Park through the Galton Gate on the western boundary. This area is only open to registered tour operators at time of writing and so it is a great privilege to visit this zone. Game drive your way to reach the new exclusive Dolomite Camp, arriving in the early afternoon. The vegetation is mainly Karstveldt and Mopane shrubland with the geology dominated by dolomite formations – fittingly giving the new camp its name. (Contd.../)



(9).../ ULTIMATE NAMIBIA WILDLIFE & LANDSCAPES GROUP TOUR

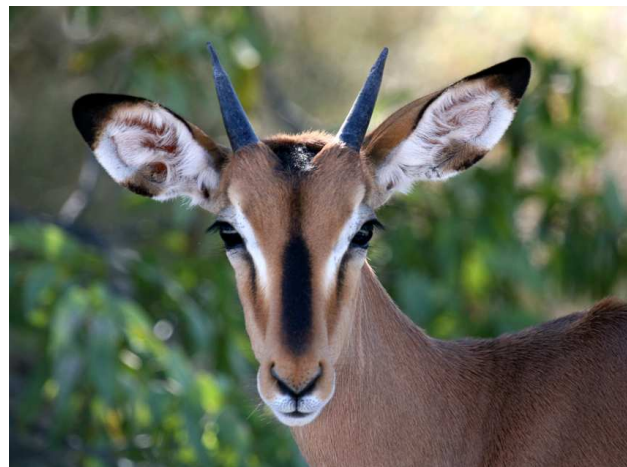
(Contd.../) The rest of the afternoon could be spent game viewing at the camp's waterhole, or possibly heading out again with your guide. After dinner, enjoy an exciting night drive, which will offer you a good chance of seeing nocturnal animals such as spring hares, aardvark, Cape and bat-eared foxes, aardwolf, genets, and possibly some of the larger cats.



Etosha National Park covers 22,270 km², of which approximately 5,000 km² is made up of saline depressions or 'pans'. The largest of these pans, the Etosha Pan, can be classified as a saline desert in its own right. The Etosha Pan lies in the Owambo Basin, on the north-western edge of the Namibian Kalahari Desert. Until three million years ago it formed part of huge, shallow lake that was reduced to a complex of salt pans when the major river that fed it, the Kunene, changed course and began to flow to the Atlantic instead. If the lake existed

today, it would be the third largest in the world. Etosha is the largest of the pans at 4,760 km² in extent. It is nowadays filled with water only when sufficient rain falls to the north in Angola, inducing floods to flow southward along the Cuvelai drainage system.

The Park consists of grassland, woodland and savannah. Game-viewing centers around the numerous springs and waterholes where several different species can often be seen at one time. The Park boasts some 114 mammal and over 340 bird



species. Wildlife that one might see includes elephant, lion, giraffe, blue wildebeest, eland, kudu, gemsbok (oryx), zebra, rhino, cheetah, leopard, hyena, honey badger and warthog, as well as the endemic black faced impala. (Contd.../)

(10).../ ULTIMATE NAMIBIA WILDLIFE & LANDSCAPES GROUP TOUR

(Contd.../) O/n DOLOMITE CAMP, FB. Nestled in the dolomite outcrops of this vast area of western Etosha National Park, Dolomite Camp offers guests an intimate experience of one of the most scenic areas of the park - an area where previously endangered species like the Black Rhinoceros and Black-Faced Impala have bred successfully.

The camp consists of a spacious reception, lounge, bar and restaurant area – offering crimson sunrise and sunset views over the surrounding savannah. From this point, a walkway leads to thatched, en-suite chalets nestled amongst the rocky outcrops, providing privacy and dramatic and panoramic landscape views.

The camp's interiors are designed to harmonise with the natural surroundings, characterized by weathered dolomite rock formations, Mopane, Moringa and savannah woodland. It is here beneath the rugged shoulders of the dolomite outcrops and boulders that tranquility is truly found. Dolomite Camp offers a profound and world-class, first of its kind experience inside the biodiversity-rich western section of Etosha National Park and moreover presents guests with a wilderness experience that is unmatched in terms of privacy and landscape viewing.

Day 10

Today, after breakfast, game drive your way across ETOSHA NATIONAL PARK to arrive at Okaukuejo Resort in the afternoon, having had lunch en route. The afternoon can again be spent game viewing at the excellent floodlit waterhole where game comes and goes throughout the day and night, or possibly heading out again with your guide.



O/n OKAUKUEJO RESORT, FB. Okaukuejo was the first tourist camp to open in Etosha. It is famous for its floodlit waterhole where visitors can observe, at close quarters, a spectacle of wildlife congregating and interacting.

Accommodation is in comfortable en-suite chalets located a short walk from the waterhole, There is a buffet restaurant, bar, swimming pool, curio shop, post office and viewing tower.

(11).../ ULTIMATE NAMIBIA WILDLIFE & LANDSCAPES GROUP TOUR

Day 11 Full day of exciting game viewing within Etosha National Park, on game drives with your guide and at Okaukuejo's busy waterhole. O/n OKAUKUEJO RESORT, FB.

Day 12 Game drive your way from Okaukuejo Resort to exit Etosha National Park at Andersson Gate and then continue south to stay at Okonjima Bush Camp, located at the base of the Omboroko Mountains near Waterberg. This is a wonderful highlight on which to conclude your tour. Here you can enjoy the welcoming atmosphere, superb accommodation and fantastic activities; starting with a guided afternoon excursion and a visit to the night hide after dinner.

OKONJIMA is home to the AFRICAT FOUNDATION, a wildlife sanctuary which focuses on the research and rehabilitation of Africa's big cats, especially injured or captured leopard and cheetah. Close encounters with leopard and cheetah are an unforgettable highlight. Activities include leopard tracking by vehicle, a visit to the cheetah welfare project and a visit to the night hide where nocturnal animals such as porcupine, caracal, honey badger and even leopard may be seen.



O/n OKONJIMA BUSH CAMP, FB. The delightful accommodation at Okonjima Bush Camp consists of thatched African style chalets, well spaced out for privacy in the tranquil bush surroundings, plus a central main Lapa area in the form of a camel thorn pod where meals are taken and activities commence. Each exclusive en-suite chalet is completely private and the green canvas 'walls' can be rolled up to give you an 180 degree view so you can lie in bed and watch life in the bush going on around you whilst you relax in total comfort.

Day 13 Rise early this morning for another memorable guided activity before you return to Bush Camp for a sumptuous breakfast. After freshening up you will depart for WINDHOEK in the late morning, via the town of Okahandja. Upon your arrival into Windhoek you will be transferred to the airport to catch your homebound flight. Depart on flight to JOHANNESBURG. Connect with flight to LONDON HEATHROW.

Day 14 Arrive LONDON HEATHROW.

(12).../ ULTIMATE NAMIBIA WILDLIFE & LANDSCAPES GROUP TOUR



Departure Dates & Prices:

ULTIMATE NAMIBIA WILDLIFE & LANDSCAPES SMALL GROUP TOUR

Minimum group size is 2, maximum 10 plus the tour leader.

Departure Dates from London

2012

31st March – 13th April 2012

12th May – 25th May 2012

16th June - 29th June 2012

14th July - 27th July 2012

11th August – 24th August 2012

6th October – 19th October 2012

3rd November 16th November 2012

Tour Price: £4,055 per person

Single Room Supplement: £315

Please call 01803 866965 if you have any queries, would like to secure your place on the tour, and/or if you would like to extend the tour to include other locations.

We would be pleased to arrange pre and/or post-tour extensions on request.



IMPORTANT NOTES TO ACCOMPANY THE ABOVE ITINERARY

NB: Meals are provided as follows: RO = room only (no meals), BB = bed and breakfast, HB = Half Board, FB = full board, FI = all meals and selected drinks.

NB: The above itinerary and its quoted price are based on specific hotels and lodges. Should there be insufficient availability at the time of booking, alternative hotels and lodges of a similar standard may have to be booked instead, in which case the itinerary and/or price may change.

NB: Prices are based on specific airlines and specific seating classes. The price may change if those are not available at the time of booking. We strongly advise booking early to secure the prices quoted, particularly as the seating classes quoted for are usually the first to be filled.

NB: The quoted price for the above itinerary is based on current airline fares (both international and domestic), fuel surcharges and flight taxes. These (and other tour costs) may be subject to unanticipated increases beyond our control at short notice, either before or after you have booked the tour, in which case the price would need to be revised accordingly.

NB: All itineraries are subject to change without notice to take into account possible airline flight schedule changes which can take place before departure date or during the tour, and other operational factors.

NB: The quoted price for the above itinerary is based on current airline fares (both international and domestic), fuel surcharges and flight taxes. These (and other tour costs) may be subject to unanticipated increases beyond our control at short notice, either before or after you have booked the tour, in which case the price would need to be revised accordingly.

NB: Once the tour has been booked and a deposit paid, any further changes initiated by the client may be subject to additional charges.

NB: Inclusive tours and excursions as stated in the itinerary will have been pre-paid. Once full payment has been made and/or clients are actually at their destination, should clients be disinclined to partake of any inclusive tour or excursion, no refunds will be possible. Excursions marked as 'Optional' are not included in the price.

NB: Prices are based on standard rooms unless otherwise stated in the itinerary. Should you wish to upgrade please let us know.

NB: This tour may involve travel in remote areas. This adds to the adventure and increases the opportunity to enjoy a true wildlife/wilderness experience. However, due to terrain, weather, road conditions, and other factors beyond our control, some elements of the tour may have to be altered. Times of some activities may need to be changed or even cancelled due to the conditions. If an activity is cancelled it will usually be replaced with an alternative activity that is more appropriate for the conditions. Advance notice will be given for any changes where possible, although at times changes may need to be made whilst the tour is in progress.

NB: With any trip involving wildlife it is impossible to guarantee a sighting, but each trip is designed around known habitats. Every effort will be made to ensure a sighting, but cannot be held responsible if no sighting is made due to the wildlife itself, weather, or any other elements beyond our control.

NB: Some African wildlife is potentially very dangerous/lethal. Do not become complacent and be sure to adhere to all instructions and advice made by lodge staff and rangers.

NB: Some service providers may require that guests sign an indemnity waiver form and may refuse services if these forms are not signed. Reef and Rainforest Tours cannot give refunds for services not provided due to a refusal to sign such forms.

NB: Although a relatively developed country, Namibia still has a precarious infrastructure including unreliable electricity supply, potholed roads, and criminal elements. Bookings will only be accepted on the understanding that the client accepts Reef and Rainforest Tours has done everything in its power to ensure there are no difficulties, but has no control over standards of some equipment, available accommodation and services, airline and hotel reservation policies, criminals, flight schedule changes etc.

NB: Adequate insurance cover is mandatory. Please supply us with details of your cover.

NB: Flight timings are subject to change. Please do not rely on the timings in this itinerary. Please always check with the airlines at least the day before flying. All domestic flights should be re-confirmed at least 36 hours before departure. Please also ensure international flights are re-confirmed at least 72 hours before departure. When abroad your hotel/our representatives should be happy to provide the service on request.

NB: Any clients arriving from East Africa (Kenya, Tanzania and Uganda), Central or West Africa and South America, will need Yellow Fever certificates to enter Namibia.

NB: Should you wish to reserve specific seats on your flights please let us know.

NB: Tips are not included and are payable locally at your discretion.

Reef and Rainforest Tours Ltd.

A7 Dart Marine Park, Steamer Quay, Totnes, Devon, TQ9 5AL, UK

Tel: ++ 44 (0)1803 866965 Fax: ++ 44 (0)1803 865916

Websites: www.reefandrainforest.co.uk www.familytours.co.uk

E-mail: mail@reefandrainforest.co.uk

