

Reef & Rainforest



Special Itinerary:

Namibia's Natural Treasures Fly-In Safari

11 Days Set Departure

Various Guaranteed Departures 2011 & 2012



Namibia's Natural Treasures Fly-In Safari Set Departure

Namibia's beauty from the air is truly astounding, where patterns and colours of rock, dunes, mountains and coast as well as the sheer scale of Namibia's wilderness can be fully appreciated. It has to be seen to be believed – and even then you may struggle to believe what you're seeing!

This itinerary allows a privileged maximum of FOUR passengers to explore the diverse scenery of Namibia, including safari in ETOSHA NATIONAL PARK, game drives in search of Desert Elephants and other wildlife as well as a visit to the Himba community in KAOKOLAND, the World Heritage site of Twyfelfontein in beautiful DAMARALAND, and finally, after a flight over the NAMIB DESERT dune sea and SOSSUSVLEI, enjoy the scenic splendour of WOLWEDANS.



Departure Dates:

2011

22nd December- 01 January 2012

2012

05th January - 15th January 2012
19th January - 29th January 2012
02nd February – 12th February 2012
16th February – 26th February 2012
01st March – 11th March 2012
15th March – 25th March 2012
29th March - 08 April 2012
12th April – 22nd April 2012
26th April – 06 May 2012

2012 (Contd.../)

10th May – 20th May 2012
24th May – 03rd June 2012
07th June – 17th June 2012
21st June – 01st July 2012
05th July – 15th June 2012
19th July - 29th July 2012
02nd August – 12th August 2012
16th August – 26th August 2012
30th August - 09th September 2012
13th September – 23rd September 2012
27th September – 07th October 2012
11th October – 21st October 2012

Departures are GUARANTEED TO RUN with a minimum of two people, and have a maximum of FOUR participants.

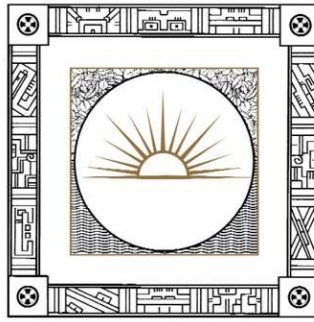


NAMIBIA'S NATURAL TREASURES FLY-IN SAFARI

ITINERARY IN BRIEF

- Day 01 Depart **LONDON**.
- Day 02 Arrive **JOHANNESBURG**. Connect with flight to **WINDHOEK**. Transfer to the hotel. O/n **OLIVE GROVE (LUXURY ROOM)**, BB.
- Day 03 Transfer to the airport. Meet pilot. Fly to **ETOSHA NATIONAL PARK**. Transfer to the lodge. Afternoon game drive in the reserve. O/n **ONGUMA TENTED CAMP**, FB.
- Day 04 Full day of game viewing in **ETOSHA NATIONAL PARK**. O/n **ONGUMA TENTED CAMP**, FB.
- Day 05 Fly to **KAOKOLAND**. Transfer to the lodge. Afternoon to enjoy lodge activities on the **PURROS CONSERVANCY**, including desert-adapted elephant tracking, 4x4 game drives, night drives, desert walks, Himba village visits. O/n **OKAHIRONGO ELEPHANT LODGE**, FB.
- Day 06 Day to enjoy lodge activities in the **PURROS CONSERVANCY**. O/n **OKAHIRONGO ELEPHANT LODGE**, FB.
- Day 07 Fly to **DAMARALAND**. Transfer to the lodge. Afternoon excursion to the ancient rock engravings at **TWYFELFONTEIN** World Heritage Site. O/n **MOWANI MOUNTAIN CAMP**, FB.
- Day 08 Fly to **SWAKOPMUND**. Lunch in the town, then fly to **WOLWEDANS** in the **NAMIBRAND NATURE RESERVE**. O/n **WOLWEDANS DUNES LODGE**, FI.
- Day 09 Day to explore the stunning **NAMIBRAND NATURE RESERVE** by Land Rover or relax and enjoy the beautiful lodge surroundings. O/n **WOLWEDANS DUNES LODGE**, FI.
- Day 10 Fly to **WINDHOEK**. Assisted. Depart on flight to **JOHANNESBURG**. Connect with flight to **LONDON**.
- Day 11 Arrive **LONDON**.





NAMIBIA'S NATURAL TREASURES

FLY-IN SAFARI

DETAILED ITINERARY

Day 01 Depart LONDON HEATHROW on flight to JOHANNESBURG.

Day 02 Arrive JOHANNESBURG. Connect with flight to WINDHOEK INTERNATIONAL AIRPORT, NAMIBIA. Met on arrival and transfer to the hotel. O/n OLIVE GROVE (LUXURY ROOM), BB. Olive Grove is a lovely welcoming guesthouse situated close to Windhoek's city centre in the quiet, peaceful suburb of Eros. The alfresco dining terrace, Jacuzzi, plunge pool and broad verandas invite you to unwind and relax under Namibia's open skies. Facilities also include a comfortable lounge with guest internet, and the individual guest rooms cater to every need of the discerning traveller. The emphasis remains one of simplicity and elegance. You have the option of having a restful dinner at the hotel, but there are plenty of restaurants to choose from if you prefer to dine out instead.

Day 03 Morning pick up from the hotel and transfer to Windhoek Eros Airport.



Meet your pilot and fly to Mokuti Airstrip near ETOSHA NATIONAL PARK. Met at the Mokuti airstrip and transfer to Onguma Tented Camp for a two-night stay.

The ONGUMA PRIVATE GAME RESERVE covers an area of 20,000 hectares and incorporates ecological substrata such as savannah, bushveld, omuramba and dry pan. Age-old migration routes, once used by elephant and buffalo, wander through Onguma's three dry riverbeds. Plains game such as eland, oryx, kudu, giraffe, zebra, impala and hartebeest roam freely and predators such as lion, leopard and cheetah, although not easy to spot, are

nevertheless common residents of the area. (Contd.../)

(2).../ NAMIBIA'S NATURAL TREASURES FLY-IN SAFARI, SET DEPARTURE

(Contd.../) Black rhino were introduced as part of a custodianship project with much success, the first calf being born in October 2002. More than 300 bird species can be viewed at Onguma and the reserve boasts the largest breeding colony of white-backed vultures in Namibia. During the summer months Onguma becomes a bird-watchers paradise with many of species migrating to wetlands areas created by the seasonal rains and ephemeral river systems.

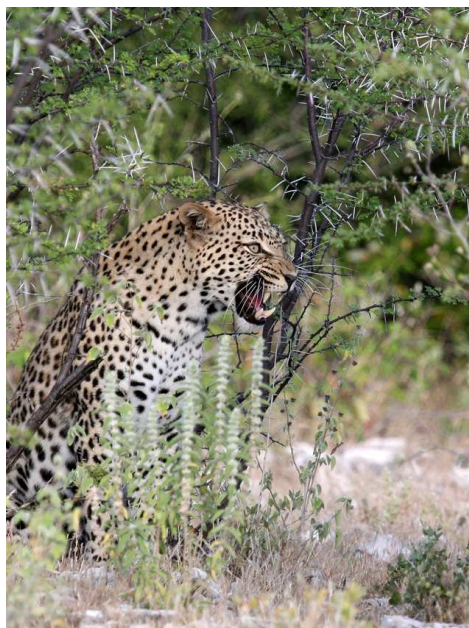
This afternoon, join a safari activity on the reserve.

O/n ONGUMA TENTED CAMP, FB. The Camp is located only eight kilometres from the Von Lindquist Gate on the eastern outskirts of the Etosha National Park, bordering Fisher's Pan. Originally part of the greater Etosha Game Reserve, Onguma is one of Namibia's best-kept secrets. Here you will be afforded the opportunity of experiencing Africa in all her beauty and diversity.



Day 04

After a leisurely breakfast, enjoy a guided drive into the ETOSHA NATIONAL PARK for a full day of game viewing. The park consists of 22,270 km² of saline desert, savannah and woodlands, and is one of the largest parks in Africa. Its definitive feature is the Etosha Pan, a vast, shallow depression of approximately 5,000 km². Of the 114 mammal species found in the park, several are rare and endangered,



such as the Black Rhino and Black-Faced Impala. The former is endemic to north-western Namibia and south-western Angola. Etosha's current population of approximately 300 black rhinos represents one of the few growing populations in the world. Etosha's elephants are reputed to be some of the largest in Africa, the tallest measuring up to four metres at the shoulder. However, their tusks are relatively small, due to genetics and mineral deficiencies in their diet. O/n ONGUMA TENTED CAMP, FB.

(3).../ NAMIBIA'S NATURAL TREASURES FLY-IN SAFARI, SET DEPARTURE

Day 05

After a sumptuous breakfast meet your pilot and commence on your flight to remote KAOKOLAND in the north-west of Namibia, a truly wild area, featuring beautiful mountain landscapes and rugged tranquillity. Transfer to the lodge.



This afternoon you may explore the PURROS CONSERVANCY with activities offered by the lodge including desert adapted elephant-tracking, game and scenic drives in open 4x4 vehicles, night drives, desert walks and visits to a local Himba village (activities are included) or simply relax and enjoy your surroundings. (Contd.../)



(4).../ NAMIBIA'S NATURAL TREASURES FLY-IN SAFARI, SET DEPARTURE

(Contd.../) O/n OKAHIRONGO ELEPHANT LODGE, FB. This intimate lodge offers a highly sophisticated desert experience for a maximum of 18 guests. Accommodation comprises of seven luxury double cottages with large en-suite bathroom complete with bathtub overlooking the magnificent surroundings, two decorated basins, a choice of indoor or open air shower, and a spacious private gazebo with a queen size sun bed overlooking the mountains and ephemeral Hoarusib riverbed. The cottages are decorated in a rich and sensuous fusion of ochre, honey and sand colours, but each one with its own unique style and atmosphere: ethnic and local sculptured furnishing bring the excitement and romance of Africa, to life. The lodge has a spectacular wraparound view and you can enjoy your stay by either lazing around the swimming pool, reading a book in the cool comfort of the library, or relaxing in one of the two open-air lounges or having a body massage. The menu changes daily, a delicious fusion of Italian and African cuisine. In the evenings dinner is served by candlelight in one of the two dining rooms or in the fire-lit traditional Namibian "boma" under the stars.



Day 06 A full day to enjoy the stunning PURROS CONSERVANCY, searching for wildlife and perhaps learning about the local Himba and Herero cultures with activities offered by the lodge. O/n OKAHIRONGO PURROS ELEPHANT LODGE, FB.

Day 07 After a leisurely breakfast, meet your pilot and enjoy the scenic flight to DAMARALAND, landing around midday. Transfer to Mowani Mountain Camp for lunch and siesta. (Contd.../)

(5).../ NAMIBIA'S NATURAL TREASURES FLY-IN SAFARI, SET DEPARTURE

(Contd.../) In the afternoon, enjoy an excursion to the petroglyphs of TWYFELFONTEIN (declared a UNESCO World Heritage Site in 2007). The hillside of red sandstone boulders (petrified sand dunes) hold around 2,500 rock



engravings, depicting various animals, footprints and patterns, and is one of the largest collection of its kind in Africa. Artifacts found at the site, dating back around 6,000 years, suggest the long-term occupation of Stone Age San hunter-gatherers, followed by Khoikhoi herders.

Twyfelfontein, meaning 'doubtful spring' in Afrikaans, was named by a farmer in 1946 because he wasn't sure whether the spring would provide enough water to sustain his livestock and family. Evidence of the farm still remains today, and the (undoubtedly rather feeble) spring provides a great attraction to bird life!

The main engravings of interest lie along two circular routes, taking around two hours, and a visitor centre provides information on the history, people and geology of the area.

Return to the camp for sunset at the wonderful viewpoint and dinner.



(6).../ NAMIBIA'S NATURAL TREASURES FLY-IN SAFARI, SET DEPARTURE

(Contd.../) O/n MOWANI MOUNTAIN CAMP, FB. Set in the Twyfelfontein Conservancy between the Ugab and Huab Rivers, Mowani Mountain Camp consists of 12 luxury tents, all with en-suite facilities, decorated beautifully in East African style, each hidden in their own private location amongst the boulders. Each has a wooden deck offering an open view of the Damaraland landscape. The small pool deck is lodged between the boulders with a wonderful outlook, and the lodge's main viewpoint where sun-downer drinks are taken is breathtakingly beautiful – which is when you understand why the lodge is called Mowani - taken from the word Miwane - meaning 'Place of God'.



Day 08

Today, your charter flight will depart over ever-changing mountainous scenery, past the Brandberg Mountain (2573masl) and Messum Crater to the coastal town of SWAKOPMUND. Upon arrival, transfer into Swakopmund for lunch. Then return to the airport, and commence the incredibly scenic flight over the massive and intricate NAMIB DESERT dune sea including DEAD VLEI, SOSSUSVLEI, beautiful mountains, fairy circles, colours to WOLWEDANS, in the heart of the 185,000 hectare NAMIBRAND NATURE RESERVE. (Contd.../)



(7).../ NAMIBIA'S NATURAL TREASURES FLY-IN SAFARI, SET DEPARTURE

Met and transfer from the airstrip to the lodge. O/n WOLWEDANS DUNE LODGE, FI. Wolwedans aims at providing a unique experience close to nature, yet without compromising any comfort and style. This entire lodge is constructed on wooden platforms and overlooks the panoramic vistas of the NamibRand Reserve in all directions, capturing the desert in an intimate and memorable way. The building style is a combination of wooden poles and large canvas blinds that open up to the desert beyond.

There are nine charming and spacious canvas chalets, a four-bedded family chalet and an exclusive Mountain View Suite, all with private veranda with stunning outlook. A careful selection of furniture, linen and accessories gives the Dunes Lodge a distinct natural charm. The main complex consists of a bar and lounge, sun-downer decks with a fireplace and a spacious dining room.

Please note: Temperatures in the desert vary greatly from day to night, with temperatures reaching over 40 degrees Celcius in the daytime in summer (cooling at night), and with sub-zero degrees Celcius a common occurrence at night in winter. The wind direction is another strong influence in temperature. Please don't feel silly bringing your gloves and woolly hat to Africa as you'll be glad of them should the temperatures drop!



Day 09

Today, absorb the unique NAMIBRAND NATURE RESERVE landscape by Land Rover, travelling through the dunes, endless grassy plains and along mystical mountain formations, encountering large and small desert animals alike. Learn about this fascinating ecosystem and about the ancient survival techniques of the San people who lived here. O/n WOLWEDANS DUNES LODGE, FI.

(8).../ NAMIBIA'S NATURAL TREASURES FLY-IN SAFARI, SET DEPARTURE



Day 10 Awake in the pristine desert dawn, soaking in the atmosphere and beautiful landscape from your cosy bed. Then, after a leisurely breakfast, transfer to the airstrip and bid farewell to Wolwedans on your flight back to Windhoek International Airport. Met on arrival and assisted with the connection to your outbound flight. Depart on flight to JOHANNESBURG. Connect with flight to LONDON HEATHROW.

Day 11 Arrive LONDON HEATHROW.



(9).../ NAMIBIA'S NATURAL TREASURES FLY-IN SAFARI, SET DEPARTURE



Departure Dates & Prices:

NAMIBIA'S NATURAL TREASURES FLY-IN SAFARI, SET DEPARTURE

Departure Dates from London

2011

22nd December- 01 January 2012

2012

05th January - 15th January 2012
19th January - 29th January 2012
02nd February – 12th February 2012
16th February – 26th February 2012
01st March – 11th March 2012
15th March – 25th March 2012
29th March - 08 April 2012
2012
12th April – 22nd April 2012
26th April – 06 May 2012

2012 (Contd.../)

10th May – 20th May 2012
24th May – 03rd June 2012
07th June – 17th June 2012
21st June – 01st July 2012
05th July – 15th June 2012
19th July - 29th July 2012
02nd August – 12th August 2012
16th August – 26th August 2012
30th August - 09th September 2012
13th September – 23rd September 2012
27th September – 07th October

11th October – 21st October 2012

Departures are **GUARANTEED TO RUN** with a minimum of two people, and have a maximum of **FOUR** participants.

Tour Price: £5655 per person

Single Room Supplement: £575

Please call 01803 866965 if you have any queries, would like to secure your place on the tour, and/or if you would like to extend the tour to include other locations.

We would be pleased to arrange pre and/or post-tour extensions on request.



IMPORTANT NOTES TO ACCOMPANY THE ABOVE ITINERARY

NB: Meals are provided as follows: RO = room only (no meals), BB = bed and breakfast, HB = Half Board, FB = full board, FI = all meals and selected drinks.

NB: The above itinerary and its quoted price are based on specific hotels and lodges. Should there be insufficient availability at the time of booking, alternative hotels and lodges of a similar standard may have to be booked instead, in which case the itinerary and/or price may change.

NB: Prices are based on specific airlines and specific seating classes. The price may change if those are not available at the time of booking. We strongly advise booking early to secure the prices quoted, particularly as the seating classes quoted for are usually the first to be filled.

NB: The quoted price for the above itinerary is based on current airline fares (both international and domestic), fuel surcharges and flight taxes. These (and other tour costs) may be subject to unanticipated increases beyond our control at short notice, either before or after you have booked the tour, in which case the price would need to be revised accordingly.

NB: All itineraries are subject to change without notice to take into account possible airline flight schedule changes which can take place before departure date or during the tour, and other operational factors.

NB: The quoted price for the above itinerary is based on current airline fares (both international and domestic), fuel surcharges and flight taxes. These (and other tour costs) may be subject to unanticipated increases beyond our control at short notice, either before or after you have booked the tour, in which case the price would need to be revised accordingly.

NB: Once the tour has been booked and a deposit paid, any further changes initiated by the client may be subject to additional charges.

NB: Inclusive tours and excursions as stated in the itinerary will have been pre-paid. Once full payment has been made and/or clients are actually at their destination, should clients be disinclined to partake of any inclusive tour or excursion, no refunds will be possible. Excursions marked as 'Optional' are not included in the price.

NB: Prices are based on standard rooms unless otherwise stated in the itinerary. Should you wish to upgrade please let us know.

NB: This tour may involve travel in remote areas. This adds to the adventure and increases the opportunity to enjoy a true wildlife/wilderness experience. However, due to terrain, weather, road conditions, and other factors beyond our control, some elements of the tour may have to be altered. Times of some activities may need to be changed or even cancelled due to the conditions. If an activity is cancelled it will usually be replaced with an alternative activity that is more appropriate for the conditions. Advance notice will be given for any changes where possible, although at times changes may need to be made whilst the tour is in progress.

NB: With any trip involving wildlife it is impossible to guarantee a sighting, but each trip is designed around known habitats. Every effort will be made to ensure a sighting, but cannot be held responsible if no sighting is made due to the wildlife itself, weather, or any other elements beyond our control.

NB: Namibian wildlife is potentially very dangerous/lethal. Do not become complacent and be sure to adhere to all instructions and advice made by lodge staff and rangers.

NB: Some service providers may require that guests sign an indemnity waiver form and may refuse services if these forms are not signed. Reef and Rainforest Tours cannot give refunds for services not provided due to a refusal to sign such forms.

NB: Although a relatively developed country, Namibia still has a precarious infrastructure including unreliable electricity supply, potholed roads, and criminal elements. Bookings will only be accepted on the understanding that the client accepts Reef and Rainforest Tours has done everything in its power to ensure there are no difficulties, but has no control over standards of some equipment, available accommodation and services, airline and hotel reservation policies, criminals, flight schedule changes etc.

NB: Adequate insurance cover is mandatory. Please supply us with details of your cover.

NB: Flight timings are subject to change. Please do not rely on the timings in this itinerary. Please always check with the airlines at least the day before flying. All domestic flights should be re-confirmed at least 36 hours before departure. Please also ensure international flights are re-confirmed at least 72 hours before departure. When abroad your hotel/our representatives should be happy to provide the service on request.

NB: Any clients arriving from East Africa (Kenya, Tanzania and Uganda), Central or West Africa and South America, will need Yellow Fever certificates to enter Namibia.

NB: Should you wish to reserve specific seats on your flights please let us know.

NB: Tips are not included and are payable locally at your discretion.

Reef and Rainforest Tours Ltd.

A7 Dart Marine Park, Steamer Quay, Totnes, Devon, TQ9 5AL, UK

Tel: ++ 44 (0)1803 866965 Fax: ++ 44 (0)1803 865916

Websites: www.reefandrainforest.co.uk www.familytours.co.uk

E-mail: mail@reefandrainforest.co.uk

